

State of Wyoming Corner Record

(In compliance with the *CORNER PERPETUATION AND FILING ACT*, Wyoming Statutes, 1997, Section 33-29-140, et. seq., and the Rules and Regulations of the Board of Registration for Professional Engineers and Professional Land Surveyors)

Reverse side of this form may be used if more space is needed.

Record of original survey and citation of source of historical information (if corner is lost or obliterated). Description of corner monumentation evidence found and/or monument and accessories established to perpetuate the location of this corner. Sketch of relative location of monument, accessories, and reference points with course and distance to adjacent corner(s) (if determined in this survey). Method and rationale for reestablishment of lost or obliterated corner.

G.L.O. Record: U.S. Deputy Surveyor, Edward D. Bright, Sept. 1868; 40.00 Chains, Set conglomerate stone 13 x 9 x 8 for 1/4 sec. cor.

Found: 11" x 5" x 3 1/2" brown colored granite stone with a 1/4 scribed on the west face and loosely set.

Set: 2 1/2" x 30" aluminum pipe with a 3 1/4" aluminum cap marked as noted below, 26" in the ground with a orange fluorescent magnetic module set in the bottom of the monument hole. Buried the original stone as a memorial south.

See back of this sheet for section subdivision detail.

Aluminum Cap Markings

T12N R67W

1

\

4

S3

S2

1999

P.L.S. 2927

LARAMIE COUNTY CLERK
CHEYENNE, WY.

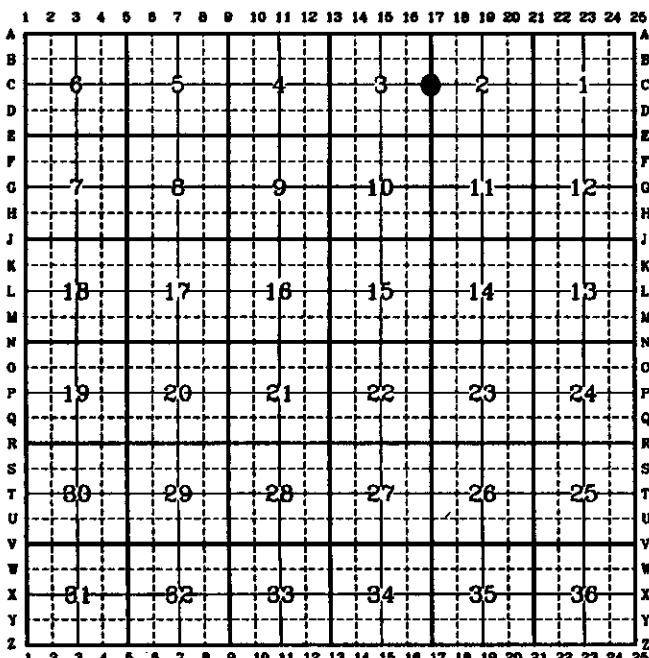
1999 JUN 21 AM 9:06

254554

Date of Field Work: April 26, 1999

Office Reference: A.V.I. Job No. 2121

CROSS INDEX DIAGRAM



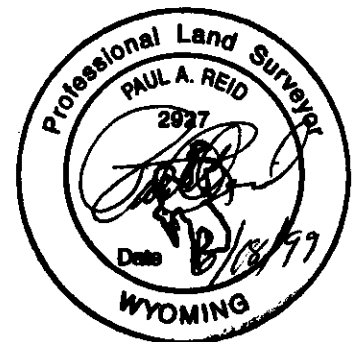
Firm/Agency, Address

Paul A. Reid, P.L.S.
A.V.I., p.c.
2035 Westland Road
Cheyenne, WY 82001

This corner record was prepared by me or under my direction and supervision.

SEAL & SIGNATURE

Telephone Number:
(307) 637-6017

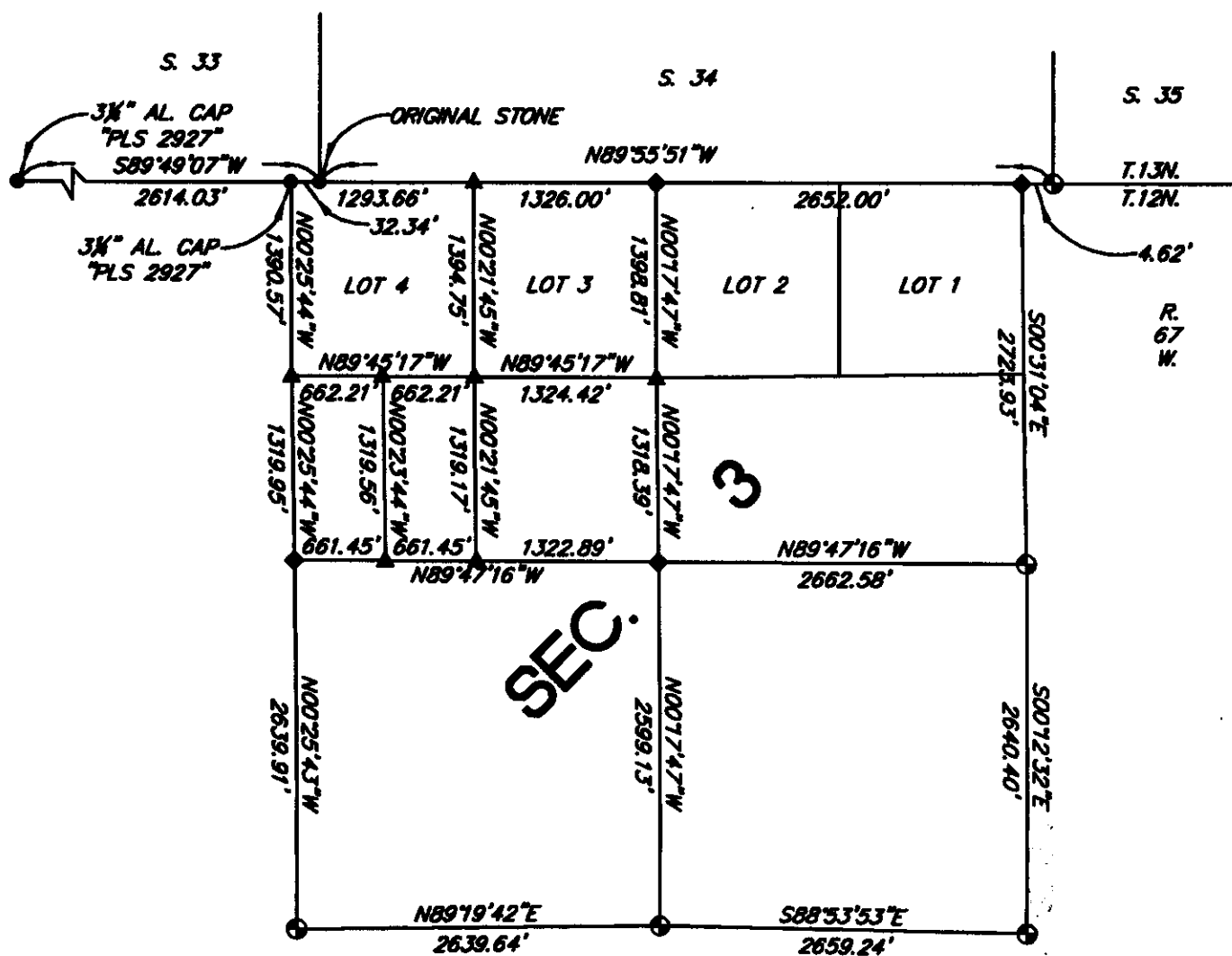


Corner Name: E 1/4

Section: 3

T.12N., R.67W.; 6th P.M. Cross-Index No.: C-17

SBRPEPLS/PLSW: March 1994



SECTION SUBDIVISION DETAIL
(NOT TO SCALE)

LEGEND

- FOUND MONUMENT AS NOTED
 - ◆ SET 3 1/4" ALUMINUM CAP MARKED "PLS 2927"
 - ▲ SET 2 1/2" ALUMINUM CAP MARKED "PLS 2927"
 - ⊙ FOUND ORIGINAL STONE, RESET 3 1/4" AL. CAP MARKED "PLS 2927"
- BASIS OF BEARINGS: NAD 83 ($\Delta \alpha = 11'06''$ APPROX.)